



## Autumn 2024 Newsletter



***Dear Parents/Carers,***

### **Welcome Back**

It has been a lovely return to school and a new school year.

We have had very changeable weather with 2 days this week being a complete washout and then some welcome Autumn sunshine at the end of the week.

Most of our children have returned to school and settled very well in their new classes and year groups. As always it does take some children a little time to adjust to the changes and if you do have any concerns, staff are always happy to support or offer advice so please ask.

### **Celebrations**

Our new website has launched!

Thank you very much to one of our parents who helped design and develop the new site. It was desperately in need of a refresh and looks amazing!

Please let us know if there is anything else you would like to see or find useful on our website. It has to be user friendly and contain the information you want.

Here is the link: <https://www.millfieldprimaryschool.co.uk/>

### **Thank you**

A big thank you to our parents who have been donating books to the school. These are very appreciated and allow children to be able to read at break and lunchtimes when they are in the playground.

### **Congratulations**

Thank you to Mrs Suter and Miss Drury who took our ever expanding choir of Y4, 5 and 6 children to Littleport Village Hall last week to entertain the community to celebrate Older Persons' Day. Despite the very heavy rain, we made it to the hall with a little help from Mil-Ken. Thank you so much Mil-Ken for stepping in at such short notice. The children of Stay and Play also made cards to hand out to the older people of Littleport.

### **Reminder**

Now for my usual rant about parking.

Unfortunately, a number of parents (who tend to arrive just before the gates are about to close) are still parking in the entrance and exit to the school car parks and blocking them at drop off and pick up. This is obviously a health and safety risk for any emergency vehicle requiring access to the school. I would strongly urge you to park at a distance from school and walk the remainder of the journey. We always have complaints from our nearby neighbours regarding parking and blocking the route along Grange Lane so if we could also be considerate of this.

The PCSO does occasionally visit the school to look at the parking arrangements and at these times parking outside the school doesn't seem to happen.

It is for our children's safety that we urge you to not park on the yellow lines, block routes, exits/entrances and I thank those who do consider this when bringing their children to and from school.

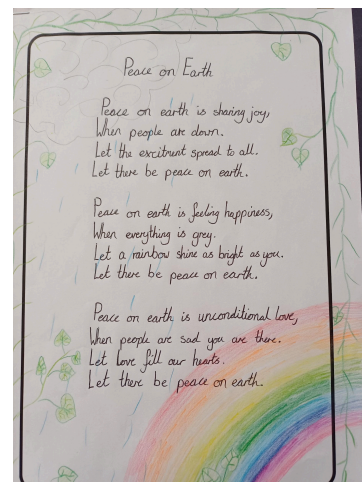
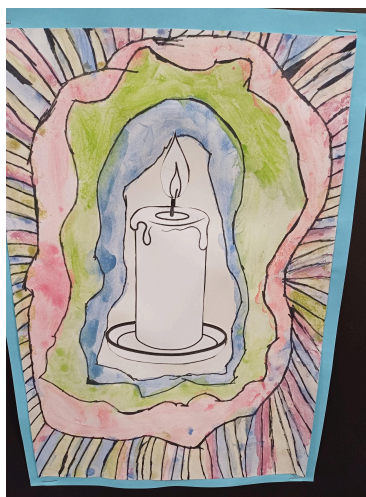
### Online Safety

I have included a website which is very useful for supporting parents with the risks of online activities and how to keep our children safe.

<https://lgfl.net/safeguarding/parent-online-safety>

### Whole school approach

At the beginning of this new term and school year, the whole school read the beautiful text 'Peace on Earth' which is a stunning picture book with rhyming text. Each class produced some lovely poems and artwork which is displayed around the school. We introduced a new handwriting programme which the children are enjoying and their handwriting is something we are very proud of, even after such a short time.



Yours sincerely,

Wendy Lee

Headteacher